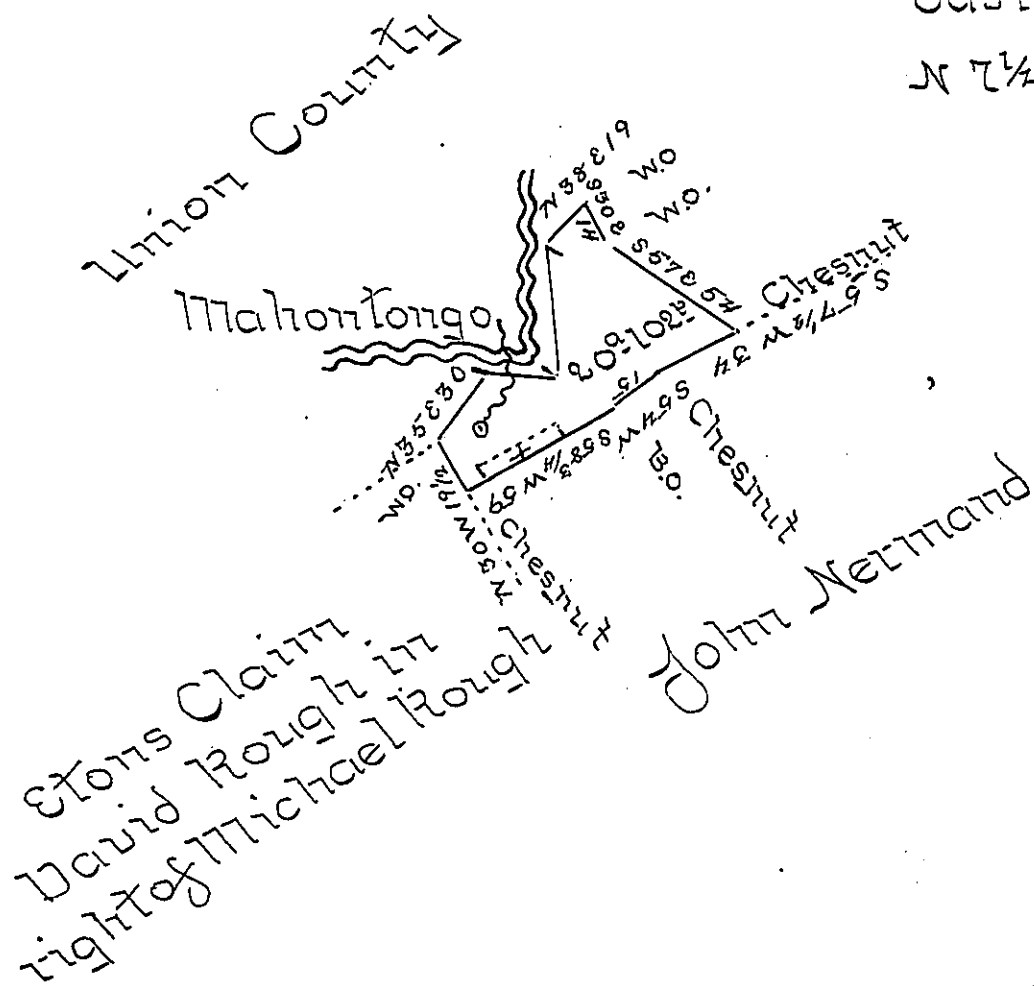


Courses & Distances
down the Creek
S 76 E 8 W. 0.
East 177. 79
N 7 1/4 W. 45 9m



Draught of twenty acres and one hundred and two perches of land with allowance of six per Cent for roads &c situate in Greenwood Township Juniata County surveyed on the first 1st day of Sept^r 1835 in pursuance of a Warrant granted to John Banter dated Aug. 13th 1835

+ The part included in the dots is cleared land ~ } James Cummings U.S.

To Jacob Spangler Esquire }
Surveyor Gen^l Pa ~ }

IN TESTIMONY that the above is a copy of the original remaining on file in the Department of Internal Affairs of Pennsylvania, made conformably to an Act of Assembly approved the 16th day of February, 1833, I have hereunto set my Hand and caused the Seal of said Department to be affixed at Harrisburg, this second day of January 1900.

James W. Latta
Secretary of Internal Affairs.